

Equipment	Decontamination Method by Risk Level for Terrestrial Activities and Equipment			Equipment Needed	Estimated Time
	Low	Medium	High		
Clothing	Visually inspect before entering or leaving the field. Remove dirt, mud, seeds, and debris from clothes, socks, shoes, etc., between sites.			Adhesive roller, hoof-pick, boot brush	5 minutes
Vehicle	Inspect and clean vehicle exterior.	Inspect and clean vehicle interior and exterior. Remove dirt, mud, seeds and debris. Sweep out vehicle interior on site.	Follow steps for medium risk. Wash vehicle, including undercarriage. Thoroughly clean interior and exterior upon return to office.	Broom, vacuum, pressure washer or car wash	5-15 minutes
Mowers	Visually inspect mower decks; remove seeds and plant material.	Follow steps for low risk. Visually inspect mower decks, tires, engine housing and undercarriage. Remove seeds, plant material and mud or dirt. Use compressed air or leaf blower to remove additional debris if necessary.	Follow steps for medium risk. Clean unit with pressure washer.	Broom, shovel, leaf blower, air compressor, pressure washer	5-60 minutes
Tractors and Heavy Equipment	Visually inspect before entering and upon leaving a field or site. Remove seeds and debris from equipment. Run fans in reverse, if possible to clean air intakes.	Follow steps for low risk. Thoroughly clean equipment and vehicle exterior with air compressor or leaf blower before and after moving between sites. See diagram on flip side of this document.	Follow steps for medium risk. Thoroughly clean equipment and vehicle exterior with pressure washer.	Broom, shovel, leaf blower, air compressor, pressure washer	5 minutes - 8 hours
Hand tools and light equipment (shovels, chainsaws, etc.)	Visually inspect and brush clean.	Follow steps for low risk. Use compressed air, a leaf blower, or rinse/spray mud and debris from tools/equipment. Always follow manufacturer's directions for cleaning equipment.		Brush, air compressor, pressure washer, leaf blower	5-10 minutes

Terrestrial Decontamination Equipment	Instructions for Use
Boot brush <input type="checkbox"/> Adhesive roller <input type="checkbox"/> Screwdriver/hoop pick <input type="checkbox"/> Identification Guides <input type="checkbox"/> Broom <input type="checkbox"/> Garbage bags <input type="checkbox"/>	Provided is a list of equipment that you will need to conduct Invasive Species Decontamination in the field. Ensure you have the necessary items before leaving for the field. The table below provides guidance on the appropriate decontamination procedures based on level of risk. For additional guidance on assessing risk level, please see the Wildlife Division Guidelines and risk table on the flip side of this document.
Heavy Equipment	
Shovel <input type="checkbox"/>	
Air Compressor/Leaf Blower <input type="checkbox"/>	
Portable Pressure Washer <input type="checkbox"/>	
Water Source (for Pressure Washer) <input type="checkbox"/>	

Personal Decontamination	Low	Medium	High
Remove seeds, debris, mud from boots & clothing	x	x	x
Launder clothing and footwear		x	x

Vehicle	Low	Medium	High
Inspect vehicle and remove mud & debris	x	x	x
Sweep/vacuum interior of vehicle		x	x
High pressure wash exterior (incl. undercarriage)			x

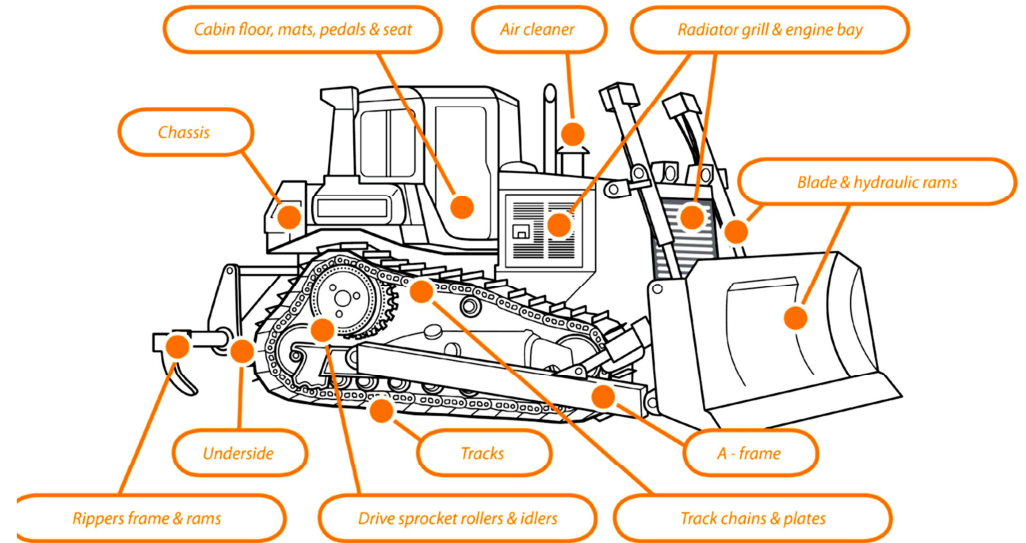
Tractors & Heavy Equipment	Low	Medium	High
Inspect and remove mud and debris	x	x	x
Use leaf blower/air compressor to remove debris		x	x
High pressure wash equipment			x
Run fans in reverse to clean air intakes	x	x	x

Research/Sampling/trapping Equipment	Low	Medium	High
Inspect and remove debris from traps, nets, etc.	x	x	x
High pressure wash equipment		x	x
Use dedicated equipment where possible			x

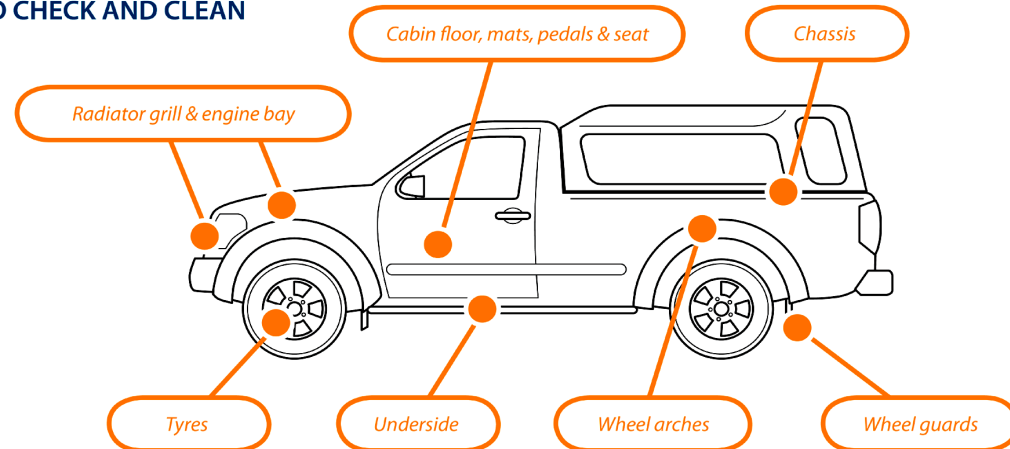
Hand tools and light equipment	Low	Medium	High
Inspect and remove mud and debris	x	x	x
Use leaf blower/air compressor to remove debris		x	x

For additional guidance on working in aquatic environments, refer to instructions contained within Aquatic Decontamination Materials. For more information on methods or special situations, refer to the Wildlife Division Guidelines.

BULLDOZER WITH KEY SPOTS TO CHECK AND CLEAN



4WD VEHICLE WITH KEY SPOTS TO CHECK AND CLEAN



Additional Resources

Best Control Practice Guides – Information on species ecology, control and treatment

<http://www.michigan.gov/invasivespecies> and click on publications

MISIN – Resources for identification, species distribution and reporting

<http://www.misin.msu.edu/>

Invasive Species Contact List – Species-specific contacts for information or reporting invasive species occurrences

http://www.michigan.gov/documents/dnr/Invasive_Species_Contact_Table_411161_7.pdf